



EXPERIENCE THE EXCEPTIONAL

Bearing Protection

to suit Warman® Pumps



- Advanced labyrinth seal design
- Flange mounted and press fit designs available
- Robust heavy duty design
- Shut-off valve to prevent bearing chamber breathing
- Proven to increase equipment reliability

Bearing Protection to suit Warman® Pumps

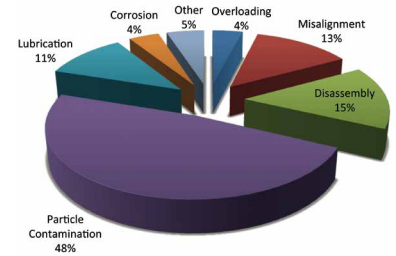
Eliminate the cause of over 50% of bearing failures

A major study into equipment reliability has shown **48%** of all bearing failures are due to particle contamination of the bearing oil, with an additional **4%** due to corrosion caused by water contamination.

This gives a total of **52% of bearing failures** caused by contamination of the bearing oil. The LabTecta®66 product family can prevent these failures.

Major benefits are:

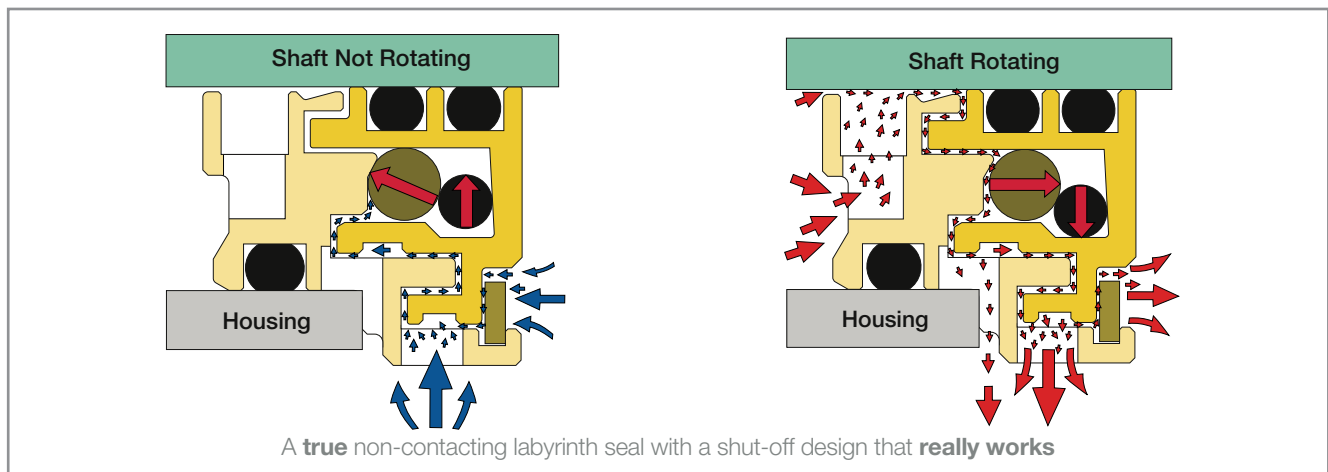
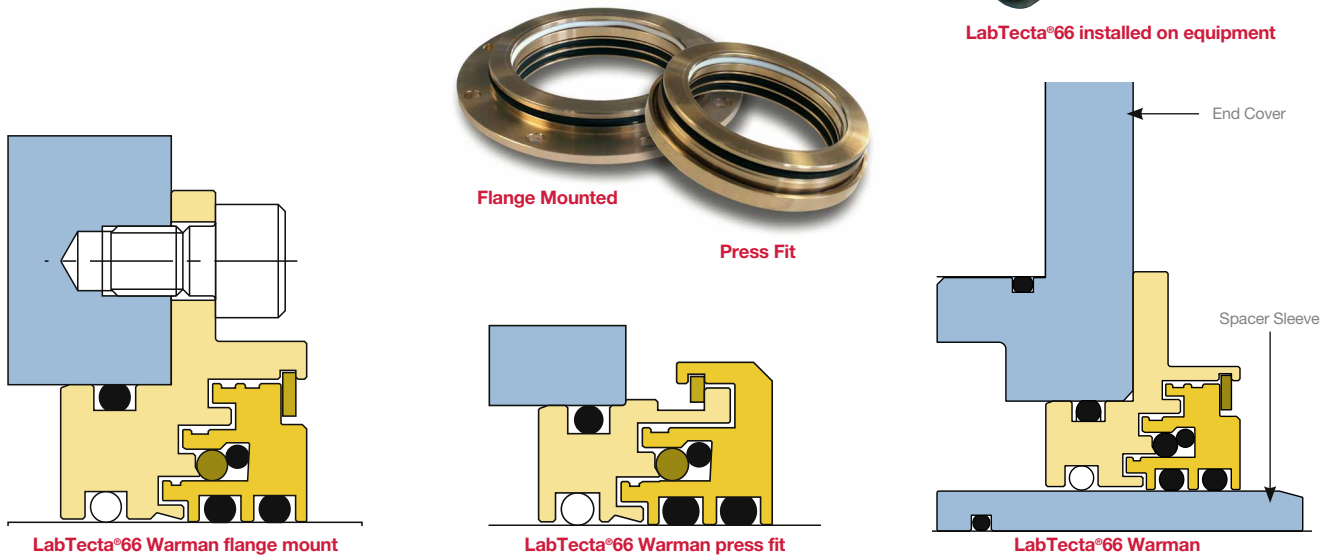
- Advanced labyrinth seal design
- Flange mounted and press fit designs available
- PTFE grease inhibitor band for superior egress protection
- Robust heavy duty design
- Shut-off valve to prevent bearing chamber breathing
- Proven to increase equipment reliability
- Full range of end covers and stub shafts also available



Causes of Bearing Failure



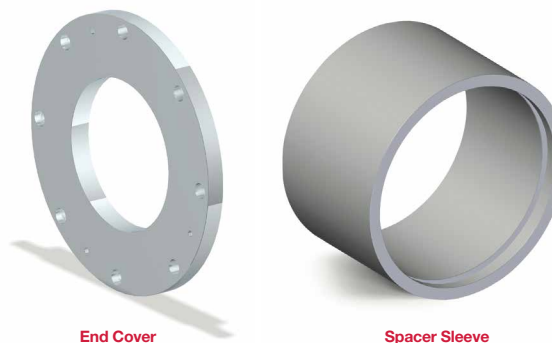
LabTecta®66 installed on equipment



LabTecta®66 integral moisture entry protection system

Bearing Protection to suit Warman® Pumps

- Full range of end covers and stub shafts available
- Manufactured components or drawing pack can be supplied
- Adjustment screws for easy bearing setting
- Effective 'O' ring seal
- Robust heavy duty design
- Proven to increase equipment reliability
- For drawing pack order ref: L-WAR-DWG



End Cover

Spacer Sleeve

Full drawing pack contains all drawings to enable stub shafts and end covers to be manufactured locally, offering the customer maximum flexibility and value

Bearing Assembly	End	Plate Assy Stock Code	Stub Assy Stock Code	Plate / Stub Stock Code	Shaft size (mm)	Housing bore (mm)	LabTecta®66 Stock Code
B005M	BOTH	L1-070-02B---WAR/01A	L1-050-01B---WAR/01A	L1-WAR01-B---01	50.0	70.0	LAM050PP001WARPM070
C005M	BOTH	L1-086-02C---WAR/01A	L1-060-01C---WAR/01A	L1-WAR02-C---01	60.0	86.0	LAM060PP001WARPM086
CC005M	PUMP	L1-086-02CC--WAR/01A	L1-060-01CC--WAR/01A	L1-WAR03-CC--01	60.0	86.0	LAM060PP001WARPM086
	DRIVE	L1-086-02CCD-WAR/01A	L1-060-01CCD-WAR/01A	L1-WAR04-CCD-01	60.0	86.0	LAM060PP001WARPM086
CAM005M	BOTH	L1-086-02C---WAR/01A	L1-060-01C---WAR/01A	L1-WAR02-C---01	60.0	86.0	LAM060PP001WARPM086
CCAM005M	PUMP	L1-086-02CC--WAR/01A	L1-060-01CC--WAR/01A	L1-WAR03-CC--01	60.0	86.0	LAM060PP001WARPM086
	DRIVE	L1-086-02CCD-WAR/01A	L1-060-01CCD-WAR/01A	L1-WAR04-CCD-01	60.0	86.0	LAM060PP001WARPM086
D005M	BOTH	L1-111-02D---WAR/01A	L1-085-01D---WAR/01A	L1-WAR05-D---01	85.0	111.0	LAM085PP001WARFM111
DD005M	PUMP	L1-111-02DD--WAR/01A	L1-085-01DD--WAR/01A	L1-WAR06-DD--01	85.0	111.0	LAM085PP001WARFM111
	DRIVE	L1-111-02DDD-WAR/01A	L1-085-01DDD-WAR/01A	L1-WAR07-DDD-01	85.0	111.0	LAM085PP001WARFM111
DAM005M	BOTH	L1-111-02D---WAR/01A	L1-085-01D---WAR/01A	L1-WAR05-D---01	85.0	111.0	LAM085PP001WARFM111
DDAM005M	PUMP	L1-111-02DD--WAR/01A	L1-085-01DD--WAR/01A	L1-WAR06-DD--01	85.0	111.0	LAM085PP001WARFM111
	DRIVE	L1-111-02DDD-WAR/01A	L1-085-01DDD-WAR/01A	L1-WAR07-DDD-01	85.0	111.0	LAM085PP001WARFM111
E005M	BOTH	L1-126-02E---WAR/01A	L1-100-01E---WAR/01A	L1-WAR08-E---01	100.0	126.0	LAM100PP001WARFM126
EE005M	PUMP	L1-153-02EE--WAR/01A	L1-127-01EE--WAR/01A	L1-WAR09-EE--01	127.0	153.0	LAM127PP001WARFM153
	DRIVE	L1-126-02EED-WAR/01A	L1-100-01EED-WAR/01A	L1-WAR10-EED-01	100.0	126.0	LAM100PP001WARPM126
EAM005M	BOTH	L1-126-02E---WAR/01A	L1-100-01E---WAR/01A	L1-WAR08-E---01	100.0	126.0	LAM100PP001WARFM126
EEAM005M	PUMP	L1-153-02EE--WAR/01A	L1-127-01EE--WAR/01A	L1-WAR09-EE--01	127.0	153.0	LAM127PP001WARFM153
	DRIVE	L1-126-02EED-WAR/01A	L1-100-01EED-WAR/01A	L1-WAR10-EED-01	100.0	126.0	LAM100PP001WARPM126
F005M	BOTH	L1-158-02F---WAR/01A	L1-127-01F---WAR/01A	L1-WAR11-F---01	127.0	158.7	LAM127PP001WARFM158
FF005M	PUMP	L1-176-02FF--WAR/01A	L1-152-01FF--WAR/01A	L1-WAR12-FF--01	152.4	176.7	LAM152PP001WARFM176
	DRIVE	L1-176-02FFD-WAR/01A	L1-152-01FFD-WAR/01A	L1-WAR13-FFD-01	152.4	176.7	LAM152PP001WARFM176
FAM005M	PUMP	L1-158-02FAM-WAR/01A	L1-127-01FAM-WAR/01A	L1-WAR14-FAM-01	127.0	158.7	LAM127PP001WARFM158
	DRIVE	L1-158-02F---WAR/01A	L1-127-01F---WAR/01A	L1-WAR11-F---01	127.0	158.7	LAM127PP001WARFM158
FRS005M	PUMP	L1-158-02FRS-WAR/01A	L1-127-01FRS-WAR/01A	L1-WAR15-FRS-01	127.0	158.7	LAM127PP001WARFM158
	DRIVE	L1-158-02F---WAR/01A	L1-127-01F---WAR/01A	L1-WAR11-F---01	127.0	158.7	LAM127PP001WARFM158
FFAM005M	PUMP	L1-176-02FFAMWAR/01A	L1-152-01FFAMWAR/01A	L1-WAR16-FFAM01	152.4	176.7	LAM152PP001WARFM176
	DRIVE	L1-176-02FFD-WAR/01A	L1-152-01FFD-WAR/01A	L1-WAR13-FFD-01	152.4	176.7	LAM152PP001WARFM176
FFRS005AMX	PUMP	L1-176-02FFRSWAR/01A	L1-152-01FFRSWAR/01A	L1-WAR17-FFRS01	152.4	176.7	LAM152PP001WARFM176
	DRIVE	L1-176-02FFD-WAR/01A	L1-152-01FFD-WAR/01A	L1-WAR13-FFD-01	152.4	176.7	LAM152PP001WARFM176
G005M	PUMP	L1-209-02G---WAR/01A	L1-177-01G---WAR/01A	L1-WAR18-G---01	177.8	209.5	LAM177PP001WARFM209
	DRIVE	L1-209-02GD--WAR/01A	L1-177-01GD--WAR/01A	L1-WAR19-GD--01	177.8	209.5	LAM177PP001WARFM209
GAM005M	PUMP	L1-209-02G---WAR/01A	L1-177-01G---WAR/01A	L1-WAR18-G---01	177.8	209.5	LAM177PP001WARFM209
	DRIVE	L1-209-02GD--WAR/01A	L1-177-01GD--WAR/01A	L1-WAR19-GD--01	177.8	209.5	LAM177PP001WARFM209
GAM005M-1	PUMP	L1-209-02GH--WAR/01A	L1-177-01GH--WAR/01A	L1-WAR20-GH--01	177.8	209.5	LAM177PP001WARFM209
	DRIVE	L1-209-02GD--WAR/01A	L1-177-01GD--WAR/01A	L1-WAR19-GD--01	177.8	209.5	LAM177PP001WARFM209
GP005M	PUMP	L1-209-02GP--WAR/01A	L1-177-01GP--WAR/01A	L1-WAR21-GP--01	177.8	209.5	LAM177PP001WARFM209
	DRIVE	L1-209-02GP--WAR/01A	L1-177-01GP--WAR/01A	L1-WAR21-GP--01	177.8	209.5	LAM177PP001WARFM209
GG005-2	PUMP	L1-234-02GG--WAR/01A	L1-203-01GG--WAR/01A	L1-WAR22-GG--01	203.2	234.8	LAM203PP001WARFM234
	DRIVE	L1-222-02GGD-WAR/01A	L1-190-01GGD-WAR/01A	L1-WAR23-GGD-01	190.5	222.2	LAM190PP001WARFM222
HG005	PUMP	L1-260-02HG--WAR/01A	L1-228-01HG--WAR/01A	L1-WAR24-HG--01	228.6	260.3	LAM228PP001WARFM260
	DRIVE	L1-260-02HG--WAR/01A	L1-228-01HG--WAR/01A	L1-WAR24-HG--01	228.6	260.3	LAM228PP001WARFM260
S005M	PUMP	L1-176-02S---WAR/01A	L1-152-01S---WAR/01A	L1-WAR25-S---01	152.4	176.7	LAM152PP001WARFM176
	DRIVE	L1-176-02SD--WAR/01A	L1-152-01SD--WAR/01A	L1-WAR26-SD--01	152.4	176.7	LAM152PP001WARFM176
T005	PUMP	L1-222-02T---WAR/01A	L1-190-01T---WAR/01A	L1-WAR27-T---01	190.5	222.2	LAM190PP001WARFM222
	DRIVE	L1-222-02TD--WAR/01A	L1-190-01TD--WAR/01A	L1-WAR28-TD--01	190.5	222.2	LAM190PP001WARFM222

Please verify sleeve and plate dimensions prior to ordering.



EXPERIENCE THE EXCEPTIONAL

To experience the exceptional, please contact your local representative. Discover full details on our website:

www.aesseal.com

For further information and safe operating limits contact our technical specialists at the locations below.



Use double mechanical seals with hazardous products.

Always take safety precautions:

- Guard your equipment
- Wear protective clothing



WARNING

UK Sales & Technical advice:

AESSEAL plc
Mill Close
Bradmarsh Business Park
Rotherham, S60 1BZ
United Kingdom

Tel: +44 (0) 1709 369966
Fax: +44 (0) 1709 720788
E-mail: seals@aesseeal.com

Distributed by:

'Our purpose is to give our customers such exceptional service that they need never consider alternative sources of supply.'



USA Sales & Technical advice:

AESSEAL Inc.
355 Dunavant Drive
Rockford,
TN. 37853
USA

Tel: +1 865 531 0192
Fax: +1 865 531 0571
E-mail: usa@aesseeal.com